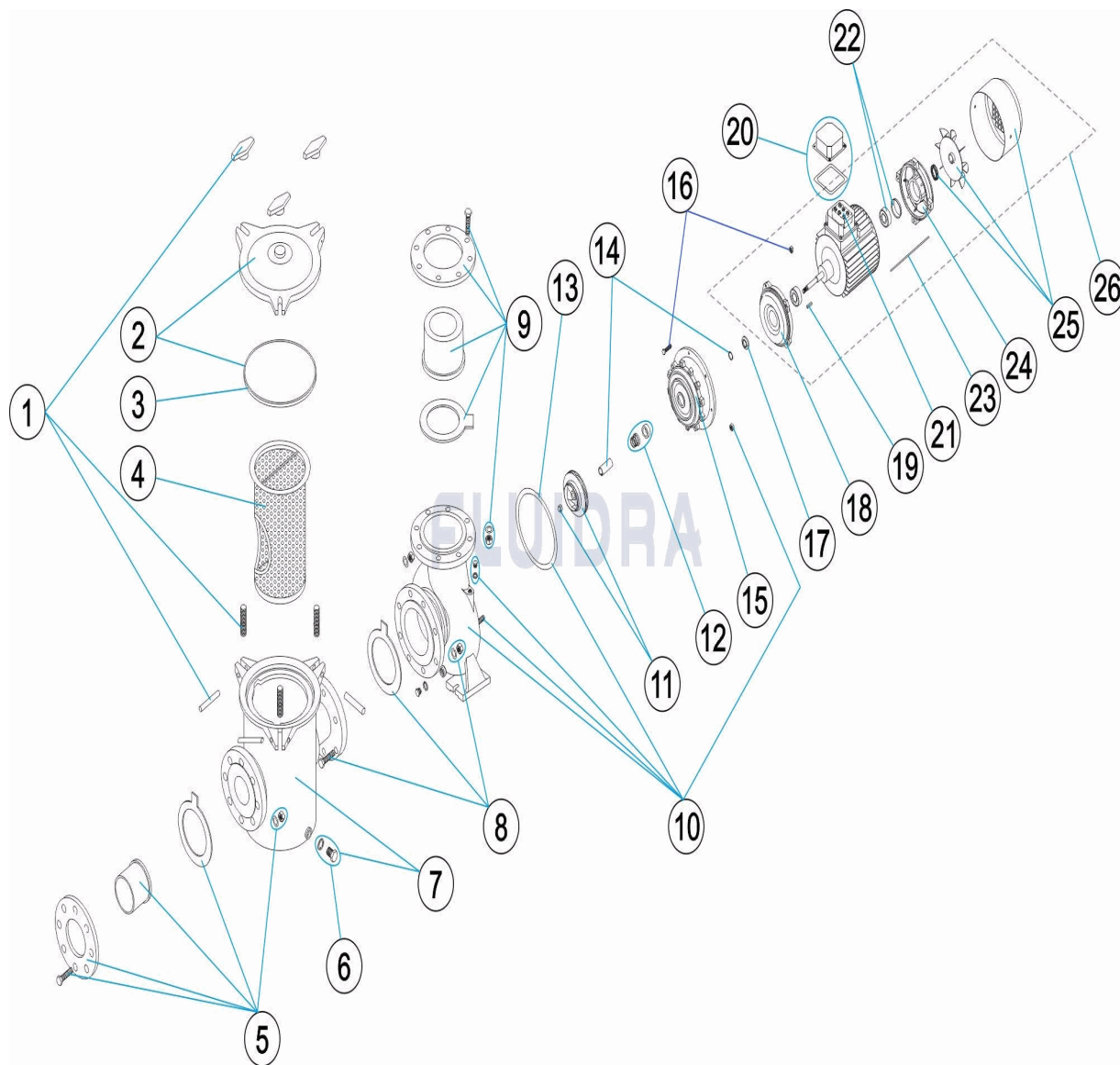


CODIGO **01208**

DESCRIPCION: **BOMBA CENTRIFUGA ARAL C-1500**



ESPAÑOL

POS	CODIGO	DESCRIPCION	CANTIDAD	POS	CODIGO	DESCRIPCION	CANTIDAD
1	4405020201	CIERRE PREFILTRO		13	4405020324	JUNTA 224X212X0,5 4HP	
2	4405020202	TAPA PREFILTRO		14	4405020439	CAMISA PROTECCION EJE 4 HP	
3	4405020255	JUNTA TORICA D. 232X8		15	4405020309	TAPA CON LINTERNA	
4	4405020203	CESTO PREFILTRO		16	4405020310	TORNILLERIA TAPA CON LINTERNA	
5	4405020301	ACCESORIOS ENLACE D 75		17	4405010374	ARANDELA DEFLECTORA 24X50X6 4HP	
6	4405020232	TAPON PURGA PREFILTRO		18	4405020000	TAPA DELANTERA MOTOR 3 HP	
7	4405020304	PREFILTRO DN65-65 2,5X2,5"		19	4405020314	CHAVETA	
8	4405020305	UNION PREFILTRO/BOMBA		20	4405020247	CJTO. CAJA CONEXIONES DE 3 - 4 HP	
9	4405020302	ACCESORIOS ENLACE D 63		21	4405020009	REGLETA DE CONEXIÓN T.100-112	
10	4405020306	CUERPO BOMBA		22	4405020239	RODAMIENTO 6206 4 CV	
11	* 4405020307	RODETE 3 HP		23	4405020250	TIRANTE MOTOR DE 3 - 5,5 HP	
11	* 4405020023	RODETE 3 HP 60 HZ		24	4405020242	TAPA TRASERA MOTOR 5,5 HP	
11	* 4405050019	RODETE 3 HP		25	4405020245	CJTO. VENTILADOR + TAPA 5,5 HP	

CODIGO **01208**DESCRIPCION: **BOMBA CENTRIFUGA ARAL C-1500**

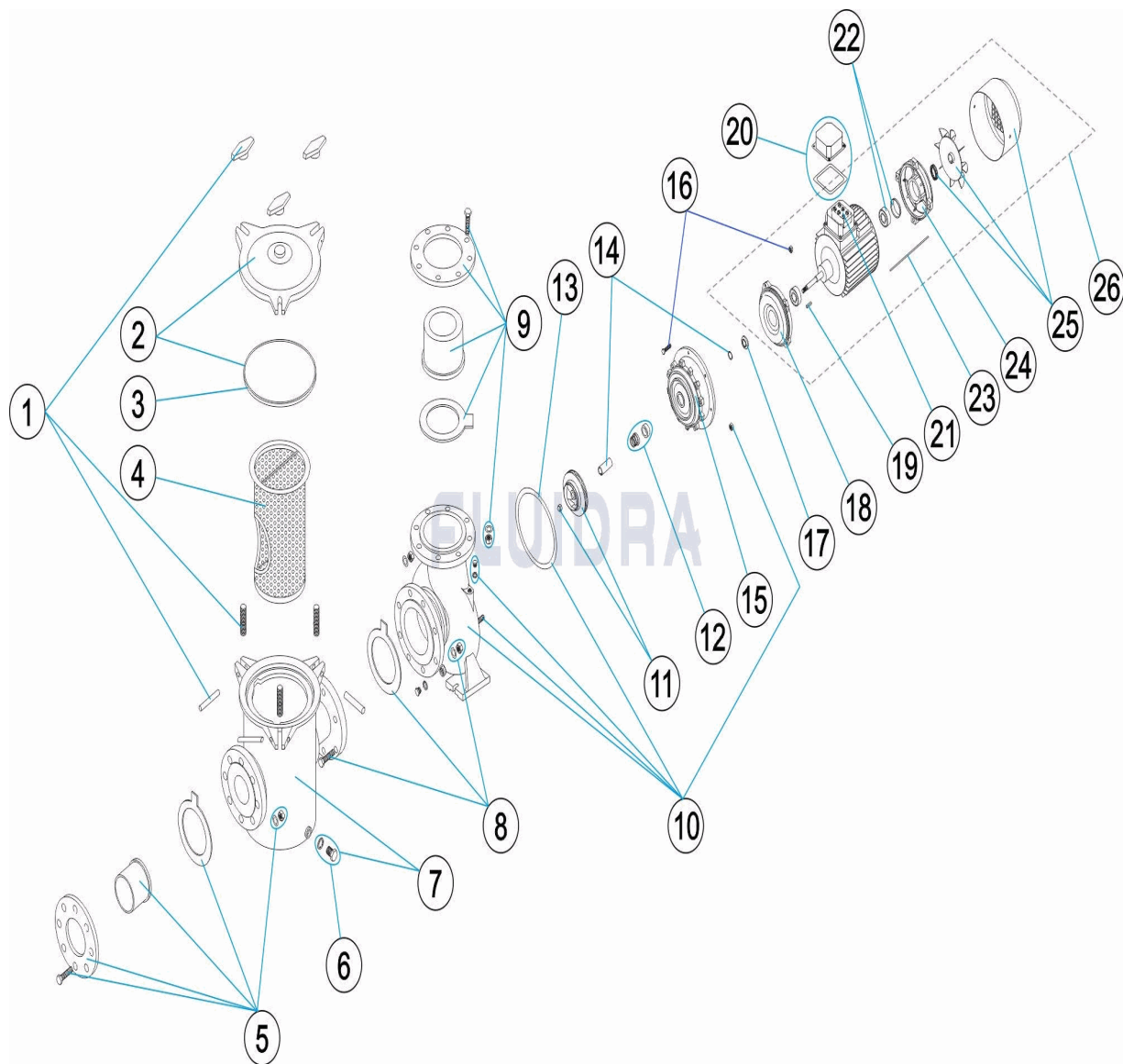
12	4405020308	JUNTA MECANICA 4 HP	26	01208R0200IE2	MOTOR 3 CV. 230/400 V.
----	------------	---------------------	----	---------------	------------------------

CODIGO **01208**DESCRIPCION: **BOMBA CENTRIFUGA ARAL C-1500****OBSERVACIONES**

POS	CODIGO	OBSERVACIONES
11	* 4405020307	PARA: HIERRO 50 HZ / IRON 50 HZ
11	* 4405020023	PARA: HIERRO 60 HZ / IRON 60 HZ
11	* 4405050019	PARA: BRONCE 50 HZ / BRONZE 50 HZ

CODE 01208

DESCRIPTION: POMPE CENTRIFUGE ARAL C-1500



FRANCAIS

POS	CODE	DESCRIPTION	QUANTITE	POS	CODE	DESCRIPTION	QUANTITE
1	4405020201	FERMETURE PREFILTRE		13	4405020324	JOINT 224X212X0,5 4HP	
2	4405020202	COUVERCLE PRÉFILTRE		14	4405020439	CHEMISE PROTECTION AXE (4 HP)	
3	4405020255	JOINT TORIQUE D. 232X8		15	4405020309	COUVERCLE AVEC LAMPE	
4	4405020203	PANIER PRÉFILTRE		16	4405020310	VISSERIE DE COUVERCLE AVEC LAMPE	
5	4405020301	RACCORDS UNION D 75		17	4405010374	JOINT RAMASSE GOUTTES 24X50X6 4HP	
6	4405020232	BOUCHON PURGE PREFILTRE		18	4405020000	COUVERCLE AXE MOTEUR 3 HP	
7	4405020304	PREFILTRE DN65-65 2,5X2,5"		19	4405020314	GOUPILLE	
8	4405020305	UNION PREFILTRE/POMPE		20	4405020247	ENSEMBLE BOITIER CONNEXION DE 3 - 4 t	
9	4405020302	RACCORDS UNION D 63		21	4405020009	REGLETTE CONNEXION T.100-112	
10	4405020306	CORPS POMPE		22	4405020239	ROULEMENT 6206 4 HP	
11	* 4405020307	TURBINE 3 HP		23	4405020250	COLLIER DE MAINTIEN MOTEUR DE 3 - 5,5	
11	* 4405020023	TURBINE 3 HP 60 HZ		24	4405020242	COUVERCLE ARRIÈRE MOTEUR 5,5 HP	
11	* 4405050019	TURBINE 3 HP		25	4405020245	ENSEMBLE VENTILATEUR + COUVERCLE 5	

* VOIR FICHE D'OBSERVATIONS

CODE **01208**

DESCRIPTION: **POMPE CENTRIFUGE ARAL C-1500**

12	4405020308	GARNITURE MÉCANIQUE 4 HP	26	01208R0200IE2	MOTOUR 3 CV. 230/400 V.
----	------------	--------------------------	----	---------------	-------------------------

CODE **01208**

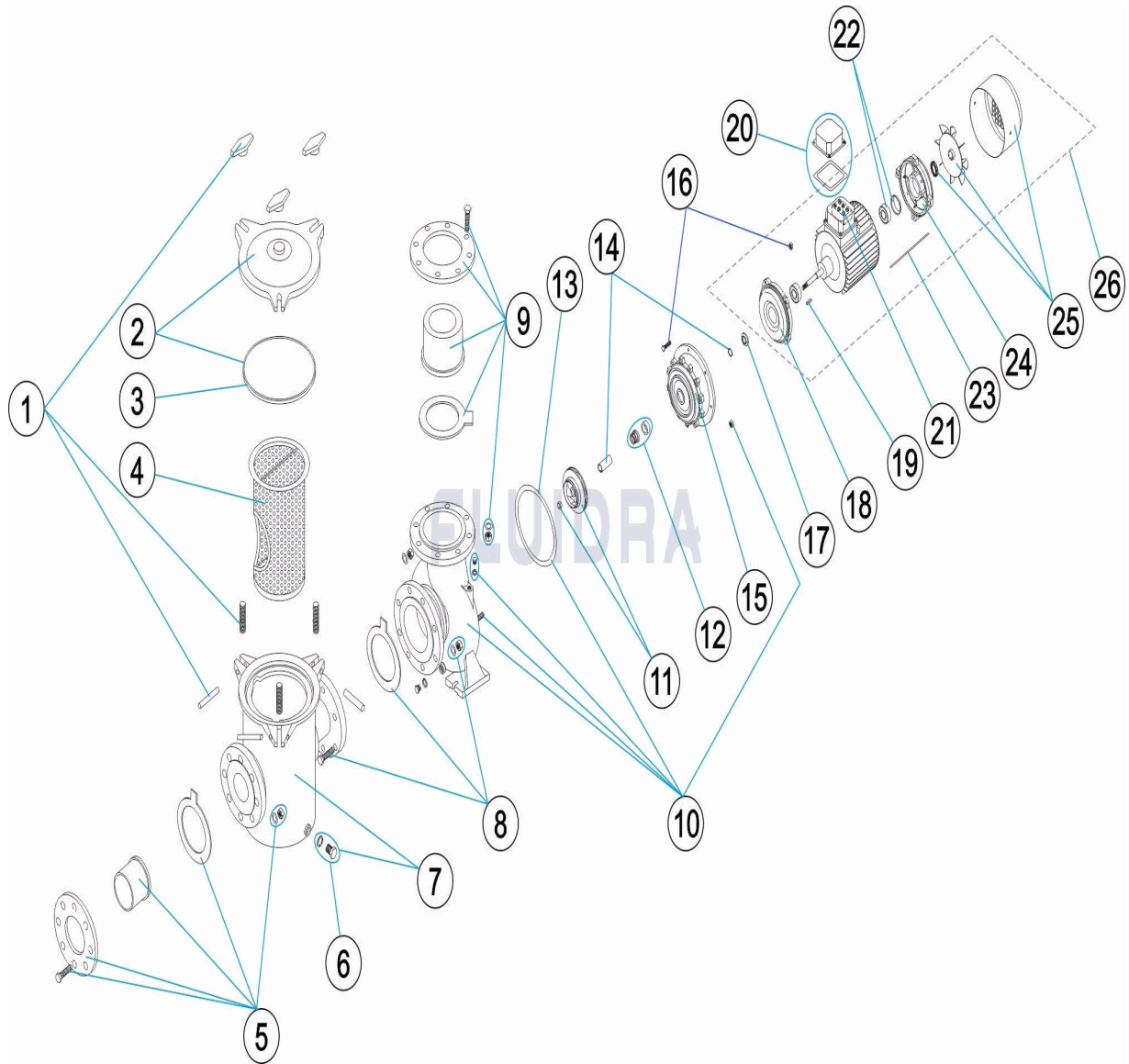
DESCRIPTION: **POMPE CENTRIFUGE ARAL C-1500**

OBSERVATIONS

POS	CODE	OBSERVATIONS
11	* 4405020307	POUR: HIERRO 50 HZ / IRON 50 HZ
11	* 4405020023	POUR: HIERRO 60 HZ / IRON 60 HZ
11	* 4405050019	POUR: BRONCE 50 HZ / BRONZE 50 HZ

CODE **01208**

DESCRIPTION: **CENTRIFUGAL PUMP ARAL C-1500**



ENGLISH

POS	CODE	DESCRIPTION	QUANTITY	POS	CODE	DESCRIPTION	QUANTITY
1	4405020201	MOTOR PIN		13	4405020324	GASKET 224X212X0,5 4HP	
2	4405020202	PRE-FILTER COVER		14	4405020439	SHAFT PROTECTION JACKET (4 HP)	
3	4405020255	O' RING D. 232X8		15	4405020309	MOTOR SUPPORT WITH COVER	
4	4405020203	PRE-FILTER BASKET		16	4405020310	SCREWS FOR MOTOR SUPPORT + COVER	
5	4405020301	UNION FITTINGS D 75		17	4405010374	DEFLECTOR WASHER 24X50X6 4HP	
6	4405020232	PRE-FILTER DRAIN PLUG		18	4405020000	FRONT MOTOR COVER 3 HP	
7	4405020304	PRE-FILTER DN65-65 2.5X2.5"		19	4405020314	PIN	
8	4405020305	PRE-FILTER/PUMP UNION		20	4405020247	CONNECTION BOX ASSEMBLY FOR 3 HP T	
9	4405020302	UNION FITTINGS D 63		21	4405020009	TERMINAL STRIP T.100-112	
10	4405020306	PUMP HOUSING		22	4405020239	BEARING 6206, 4 HP	
11	* 4405020307	IMPELLER 3 HP		23	4405020250	MOTOR SUPPORT 3 HP TO 5.5 HP	
11	* 4405020023	IMPELLER 3 HP 60 HZ		24	4405020242	REAR MOTOR COVER 5,5 HP	
11	* 4405050019	IMPELLER 3 HP		25	4405020245	FAN + COVER ASSEMBLY 5.5 HP	

* SEE OBSERVATIONS SHEET

CODE **01208**

DESCRIPTION: **CENTRIFUGAL PUMP ARAL C-1500**

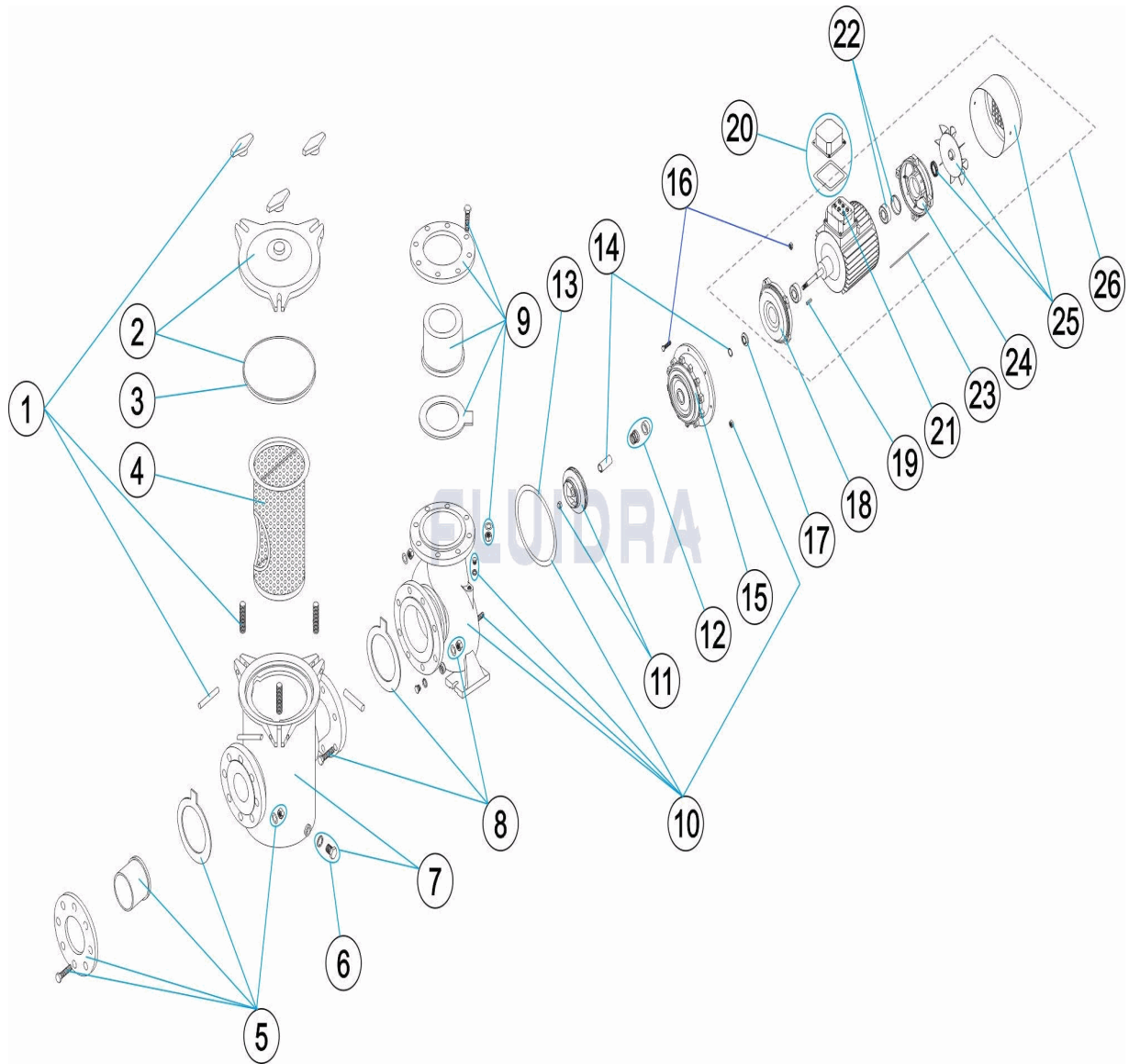
12	4405020308	MECHANICAL SEAL 4HP	26	01208R0200IE2	MOTOR 3 CV. 230/400 V.
----	------------	---------------------	----	---------------	------------------------

CODE **01208**DESCRIPTION: **CENTRIFUGAL PUMP ARAL C-1500****OBSERVATIONS**

POS	CODE	OBSERVATIONS
11	* 4405020307	FOR: HIERRO 50 HZ / IRON 50 HZ
11	* 4405020023	FOR: HIERRO 60 HZ / IRON 60 HZ
11	* 4405050019	FOR: BRONCE 50 HZ / BRONZE 50 HZ

CODICE 01208

DESCRIZIONE: POMPA CENTRIFUGA ARAL C-1500



ITALIANO

POS	CODICE	DESCRIZIONE	QUANTITA'	POS	CODICE	DESCRIZIONE	QUANTITA'
1	4405020201	CHIUSURA PREFILTRO		13	4405020324	GUARNIZIONE 224X212X0,5 4HP	
2	4405020202	COPERCHIO PREFILTRO		14	4405020439	CAMICIA PROTEZIONE ASSE 4 HP	
3	4405020255	O-RING D. 232X8		15	4405020309	COPERCHIO CON LANTERNA	
4	4405020203	CESTO PREFILTRO		16	4405020310	BULLONERIA COPERCHIO CON LANTERNA	
5	4405020301	MANICOTTI DI UNIONE D 75		17	4405010374	RONDELLA DEFLETTTRICE 24X50X6 4HP	
6	4405020232	TAPPO SPURGO PREFILTRO		18	4405020000	COPERCHIO ANTERIORE MOTORE 3 HP	
7	4405020304	PREFILTRO DN65-65 2,5X2,5"		19	4405020314	CHIAVETTA	
8	4405020305	RACCORDO PREFILTRO/POMPA		20	4405020247	GRUPPO MORSETTIERA 3-4 HP	
9	4405020302	MANICOTTI DI UNIONE D 63		21	4405020009	CONNESSIONE T.100-112	
10	4405020306	CORPO POMPA		22	4405020239	CUSCINETTO 6206 4 HP	
11	* 4405020307	RUOTA 3 HP		23	4405020250	TIRANTE MOTORE 3-5,5 HP	
11	* 4405020023	RUOTA 3 HP 60 HZ		24	4405020242	COPERCHIO POSTERIORE MOTORE 5,5 HF	
11	* 4405050019	RUOTA 3 HP		25	4405020245	GRUPPO VENTILATORE + COPERCHIO 5,5	

* SI FACCIA RIFERIMENTO AL FOGLIO DELLE OSSERVAZIONI

CODICE **01208**

DESCRIZIONE: **POMPA CENTRIFUGA ARAL C-1500**

12	4405020308	GUARNIZIONE MECCANICA 4 HP	26	01208R0200IE2	MOTOR 3 CV. 230/400 V.
----	------------	----------------------------	----	---------------	------------------------

CODICE 01208

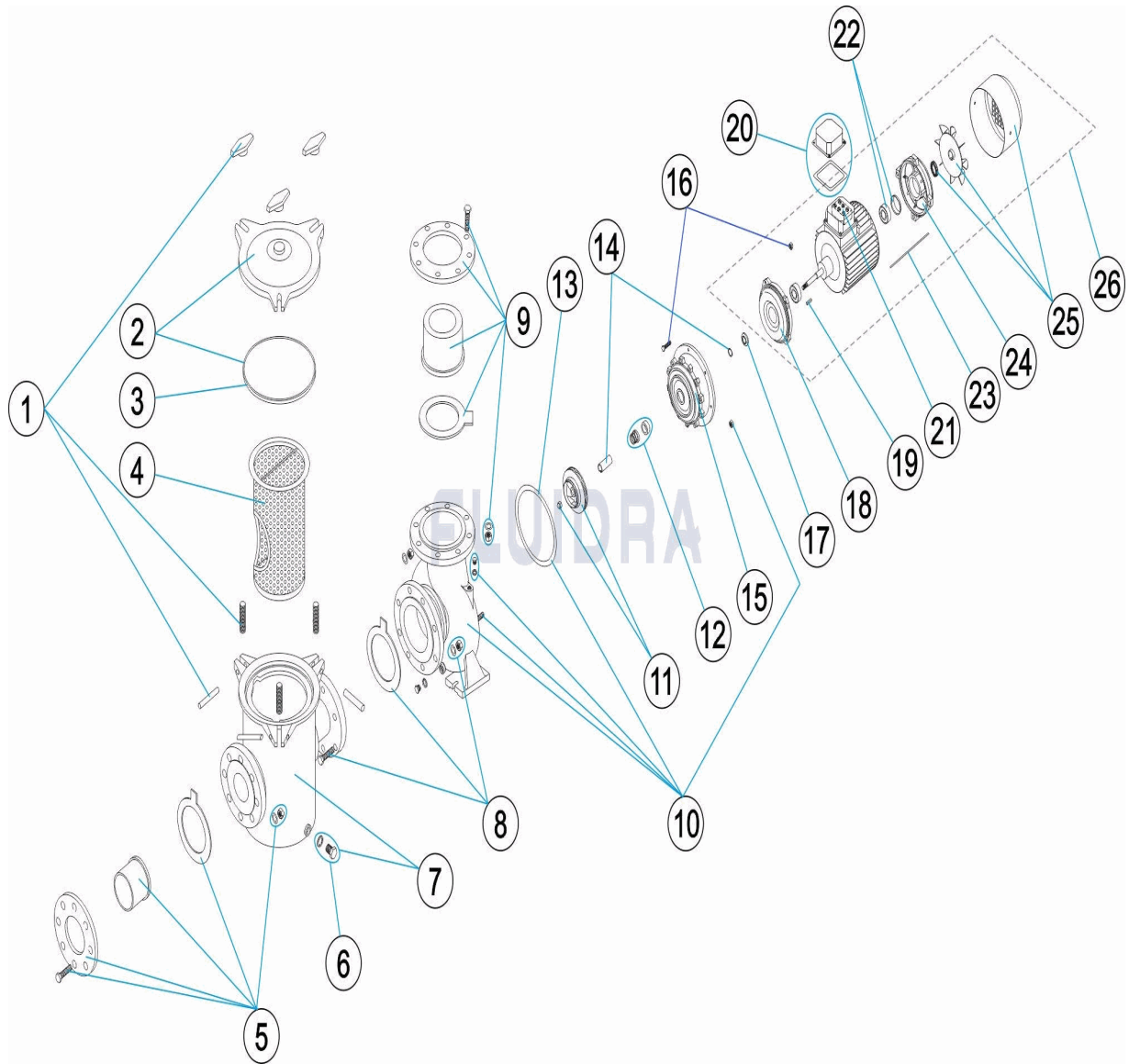
DESCRIZIONE: POMPA CENTRIFUGA ARAL C-1500

OSSERVAZIONI

POS	CODICE	OSSERVAZIONI
11	* 4405020307	PER: HIERRO 50 HZ / IRON 50 HZ
11	* 4405020023	PER: HIERRO 60 HZ / IRON 60 HZ
11	* 4405050019	PER: BRONCE 50 HZ / BRONZE 50 HZ

CODE **01208**

BESCHREIBUNG: **ZENTRIFUGALPUMPE ARAL C-1500**



DEUTSCH

POS	CODE	BESCHREIBUNG	MENGE	POS	CODE	BESCHREIBUNG	MENGE
1	4405020201	SCHLIESSVORRICHTUNG VORFILTER		13	4405020324	DICHTUNG 224 X 212 X 0,5 4 HP	
2	4405020202	VORFILTERDECKEL		14	4405020439	SCHUTZUMMATELUNG ACHSE 4 HP	
3	4405020255	O-RING D. 232 X 8		15	4405020309	ABDECKUNG MIT LATERNE	
4	4405020203	VORFILTERKORB		16	4405020310	SCHRAUBENSATZ ABDECKUNG MIT LATER	
5	4405020301	ANSCHLUSSZUBEHÖR D. 75		17	4405010374	BEILAGSCHEIBE 24 X 50 X 64 HP	
6	4405020232	ABLASSSTOPFEN VORFILTER		18	4405020000	MOTORDECKEL VORNE 3 HP	
7	4405020304	VORFILTER DN65 - 65 2,5 X 2,5"		19	4405020314	KEIL	
8	4405020305	VERBINDUNG VORFILTER/PUMPE		20	4405020247	SET ANSCHLUSS-SCHRANK 3 - 4 HP	
9	4405020302	ANSCHLUSSZUBEHÖR D. 63		21	4405020009	KLEMMLEISTE T.100-112	
10	4405020306	PUMPENGEHÄUSE		22	4405020239	WÄLZLAGER 6206 4 CV	
11	* 4405020307	LAUFRAD 3 HP		23	4405020250	MOTORZUGSTREBE 3 - 5,5 HP	
11	* 4405020023	LAUFRAD 3 HP 60 HZ		24	4405020242	MOTORDECKEL HINTEN 5,5 HP	
11	* 4405050019	LAUFRAD 3 HP		25	4405020245	SET VENTILATOR MIT ABDECKUNG 5,5 HP	

* SIEHE ANMERKUGSBLATT

CODE **01208**

BESCHREIBUNG: **ZENTRIFUGALPUMPE ARAL C-1500**

12	4405020308	GLEITRINGDICHTUNG 4 HP	26	01208R0200IE2	MOTOR 3 CV 230/400 V
----	------------	------------------------	----	---------------	----------------------

CODE **01208**

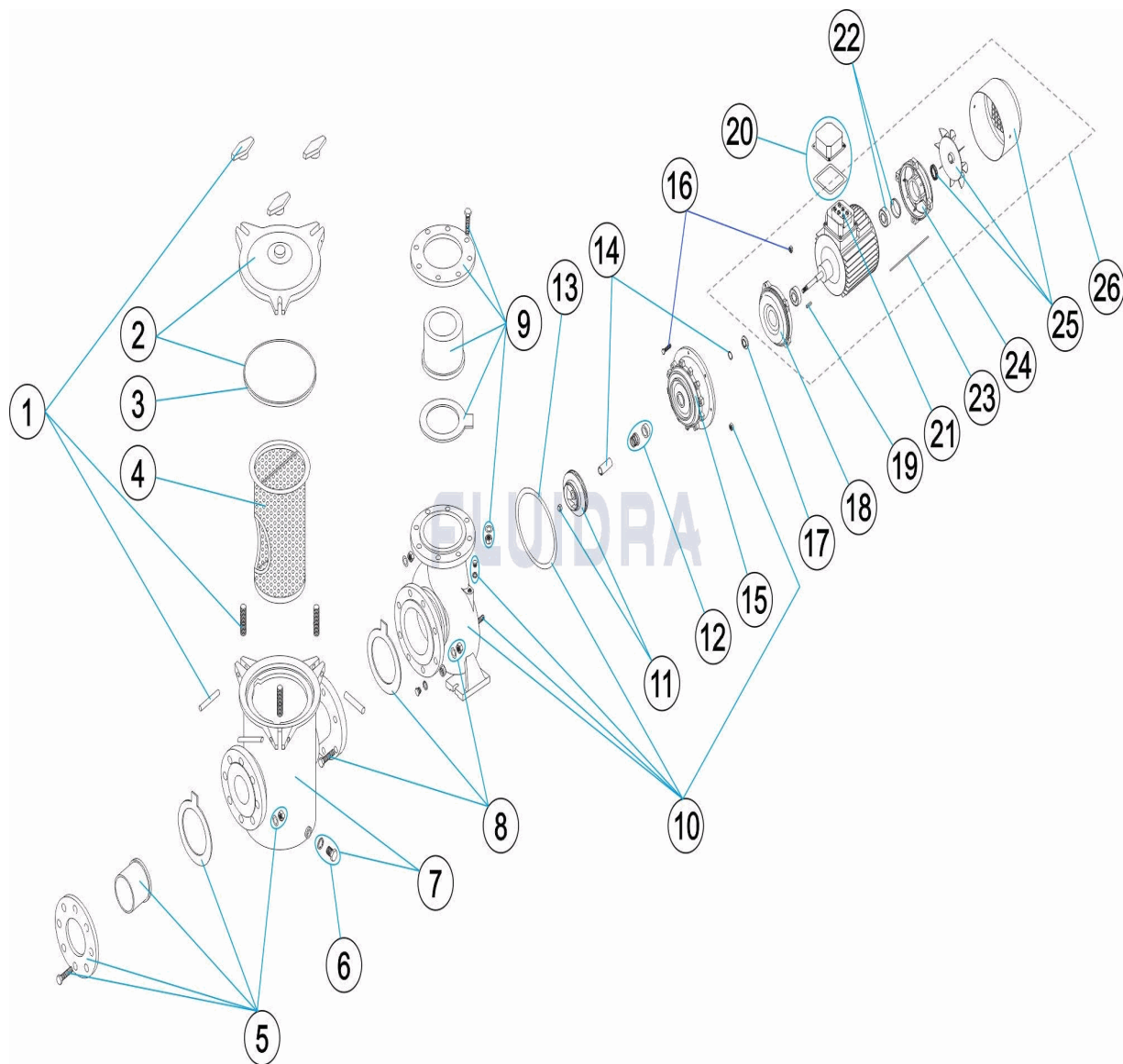
BESCHREIBUNG: **ZENTRIFUGALPUMPE ARAL C-1500**

HINWEISE

POS	CODE	HINWEISE
11	* 4405020307	FÜR: HIERRO 50 HZ / IRON 50 HZ
11	* 4405020023	FÜR: HIERRO 60 HZ / IRON 60 HZ
11	* 4405050019	FÜR: BRONCE 50 HZ / BRONZE 50 HZ

CODIGO **01208**

DESCRIÇÃO: **BOMBA CENTRÍFUGA ARAL C-1500**



PORTUGUES

POS	CODIGO	DESCRIÇÃO	JANTIDADE	POS	CODIGO	DESCRIÇÃO	JANTIDADE
1	4405020201	FECHO PRÉ-FILTRO		13	4405020324	JUNTA 224X212X0,5 4HP	
2	4405020202	TAMPA PRÉ-FILTRO		14	4405020439	CAMISA PROTECÇÃO EIXO 4 CV	
3	4405020255	JUNTA TÓRICA D. 232X8		15	4405020309	TAMPA COM LINTERNA	
4	4405020203	CESTO PRÉ-FILTRO		16	4405020310	ACESSÓRIOS TAMPA COM LINTERNA	
5	4405020301	ACESSÓRIOS DE UNIÃO D 75		17	4405010374	ANILHA DEFLECTORA 24X50X6 4HP	
6	4405020232	TAMPÃO PURGA - PRÉ-FILTRO		18	4405020000	TAMPA DIANTEIRA MOTOR 3 HP	
7	4405020304	PRÉ-FILTRO DN65-65 2,5X2,5"		19	4405020314	CHAVETA	
8	4405020305	UNIÃO PRÉ-FILTRO / BOMBA		20	4405020247	CONJUNTO CAIXA LIGAÇÕES DE 3 - 4 HP	
9	4405020302	ACESSÓRIOS DE UNIÃO D 63		21	4405020009	CALHA LIGAÇÃO T.100-112	
10	4405020306	CORPO BOMBA		22	4405020239	ROLAMIENTOS 6206 4 HP	
11	* 4405020307	RODÍZIO 3 HP		23	4405020250	TIRANTE MOTOR DE 3 - 5,5 HP	
11	* 4405020023	RODÍZIO 3 HP 60 HZ		24	4405020242	TAMPA TRASEIRA MOTOR 5,5 HP	
11	* 4405050019	RODÍZIO 3 HP		25	4405020245	CONJUNTO VENTILADOR + TAMPA 5,5 HP	

*** VEJA A FICHA DE OBSERVAÇÕES**

CODIGO **01208**

DESCRIÇÃO: **BOMBA CENTRÍFUGA ARAL C-1500**

12	4405020308	JUNTA MECÂNICA 4 HP	26	01208R0200IE2	MOTOR 3 CV. 230/400 V.
----	------------	---------------------	----	---------------	------------------------

CODIGO 01208

DESCRIÇÃO: BOMBA CENTRÍFUGA ARAL C-1500

OBSERVAÇÕES

POS	CODIGO	OBSERVAÇÕES
11	* 4405020307	PARA: HIERRO 50 HZ / IRON 50 HZ
11	* 4405020023	PARA: HIERRO 60 HZ / IRON 60 HZ
11	* 4405050019	PARA: BRONCE 50 HZ / BRONZE 50 HZ